



Edge helps public libraries better serve their communities through improved public technology services. **The Edge Toolkit** is based on a national set of benchmarks for public libraries to evaluate their public technology services, and includes resources, recommendations, and tools for strategic planning and community engagement.

INNOVATE

How is Edge groundbreaking?



- First set of national technology benchmarks for the public library field.



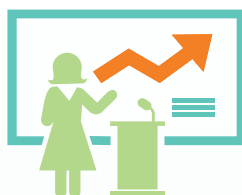
- 11 nationally recognized benchmarks in 3 strategic areas – Community Value, Engaging the Community, and Organizational Management.



- Assessment and planning tool to evaluate all aspects of library technology and services to identify strengths, gaps, and areas for improvement.

EMPOWER

What is the value of Edge?



- Edge benchmarks library services against national standards and compares results to similar-sized libraries and communities.



- Edge provides libraries with concrete data that empowers them to communicate the value of the library to local leaders and other stakeholders.



- Edge positions libraries to drive community-based decisions about public access technology investments.

TRANSFORM

How do public libraries support communities?



- Libraries use Edge to assess and improve their technology access and services in four critical areas: workforce development, access to legal and e-government resources, education and lifelong learning, and health and wellness.



- Edge enables libraries to improve quality of life in the communities they serve through the provision of technology services.



- Edge helps libraries facilitate open access to exceptional information, communication, and technology services for their communities.

TOOLKIT

What is Edge?



Benchmarks – Set of national technology standards for public libraries.



Assessment Tool – Online tool to assess and evaluate current services.



Resources – A curated set of free online materials, tools, and information to support library success.



Recommendations and Planning Tools – Peer comparison data and tools to implement recommendations.



Training – Courses to guide libraries in using their Edge results effectively.



Community Engagement – Reporting and presentation templates for communicating the value of technology services to community leaders.